

HDFocus Specification

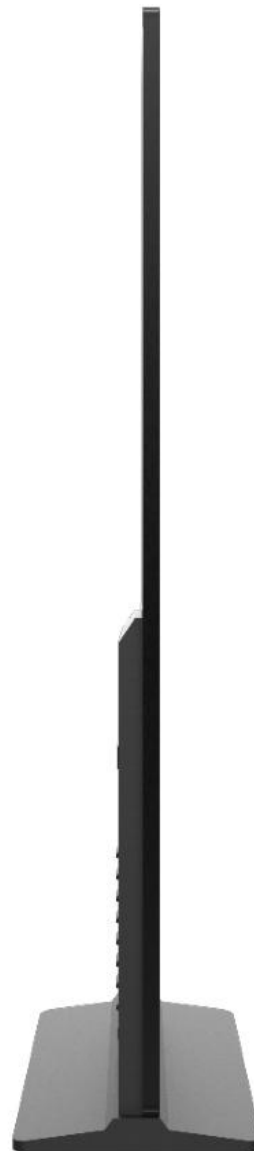
Floorstanding Kiosk with Touch
HD-65F-T Windows Max

65" Floorstanding Kiosk with Touch HD-65F-T Windows Max

1. Product Outlook



Front



Side

2. Main Features

- ✓ Excellent design with apple shape, aluminum alloy edging ;
- ✓ 65" brand new original panel with LED backlight;
- ✓ Excellent design with super slim body of only 30mm thickness;
- ✓ Built in 10 points sensitive IR touch;
- ✓ Windows OS, support to customize Android OS;
- ✓ Support to play program directly from USB;
- ✓ System support USB upgrade and remote network upgrade;
- ✓ Color available: black, silver grey, champagne golden;
- ✓ Support Ethernet, WIFI network, and can customize 3/4G function;
- ✓ Support to work together with HD-DS signage software.
- ✓ Industrial level design, support 24/7 working;
- ✓ CE&RoHS certified.

3. Display

Display Screen	65" TFT-LCD with LED backlight
Display Ratio	16:9
Color	16.77M colors (8-bit)
Display area	1428.48*803.52
Resolution	1920*1080
Brightness	450cd/m2
Contrast	1600:1
Response Time	Less than 5ms
View Angle	178° left and right, up and down
Life time	Over 50,000hrs

4. Windows Max Performance

Windows Max	Intel® Core Dual i5 CPU
RAM	DDR 3, 4G RAM
SSD	128G SSD (can expand)
Main Board	Industrial board
Network Port (Windows OS)	10/100M/1000M adaptive port
WIFI	Support WIFI
Windows OS	Windows 7, 8.1, 10 trial version

5. Interface

USB	USB*2,
COM	COM*1
HDMI Output	HDMI*1
VGA Output	VGA*1
MIC Audio Input	MIC Audio*1
Line Audio Output	Line*1
Network	RJ45*1, built-in Gigabit Ethernet
WIFI	WIFI*1, support 802.11 b/g/n

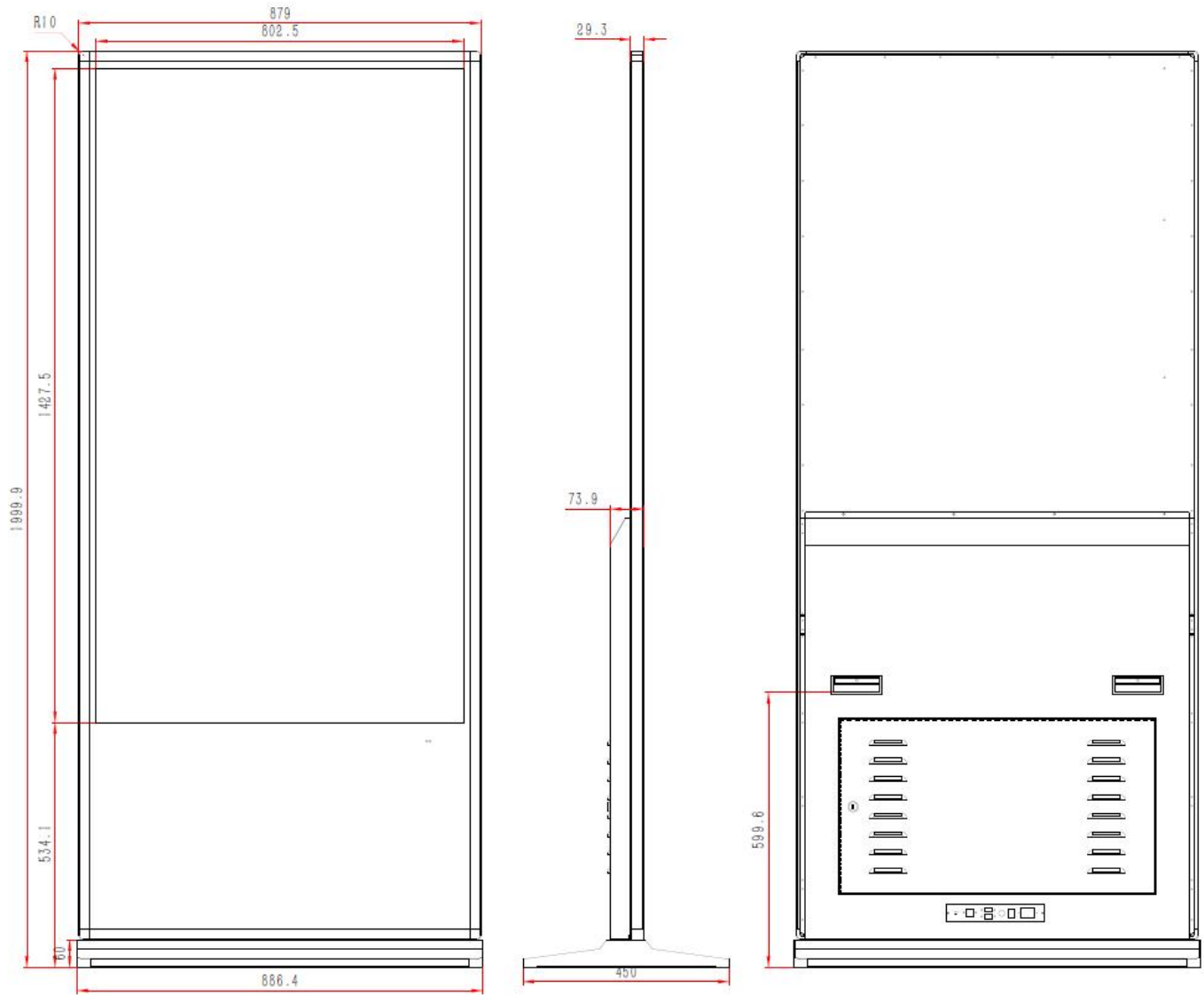
6. IR Touch

Touch Type	Infra-red
Points	10 points
Glass cover	Tempered glass cover
Response Time	Less than 5ms
Resolution	32767 * 32767
Position Accuracy	±1.5mm
Communication	USB2.0
Life Time	Over 60,000,000 touches

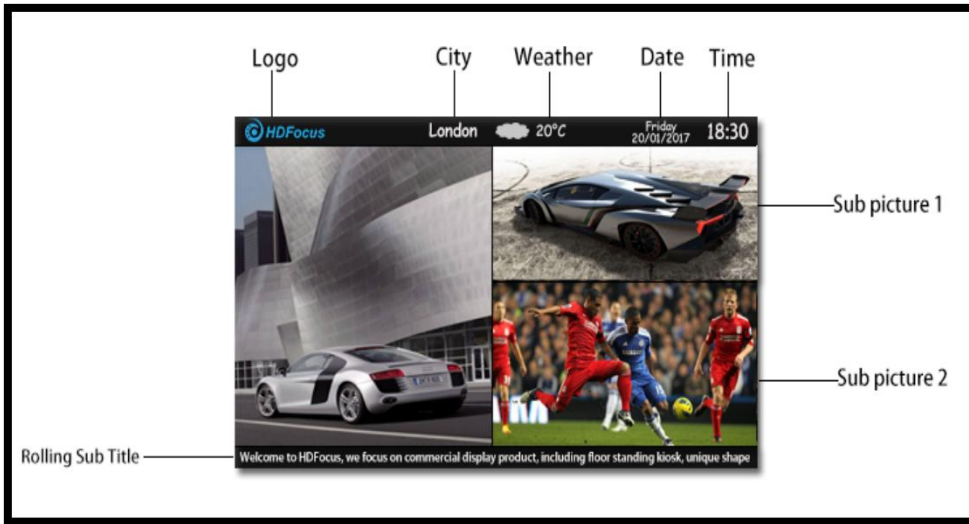
7. Others

Color	Black, silver grey, champagne golden
Format	PAL, NTSC
Speaker	10W*2
Floorstand Basement	Basement*1
Wheels	Lockable wheels (optional)
Voltage	AC100-240V 50/60Hz
Power	≤ 180W
Working Temperature	0— 40 °C
Net Dimension	1,999.9 *879*29.3mm
Gross Weight	73KG

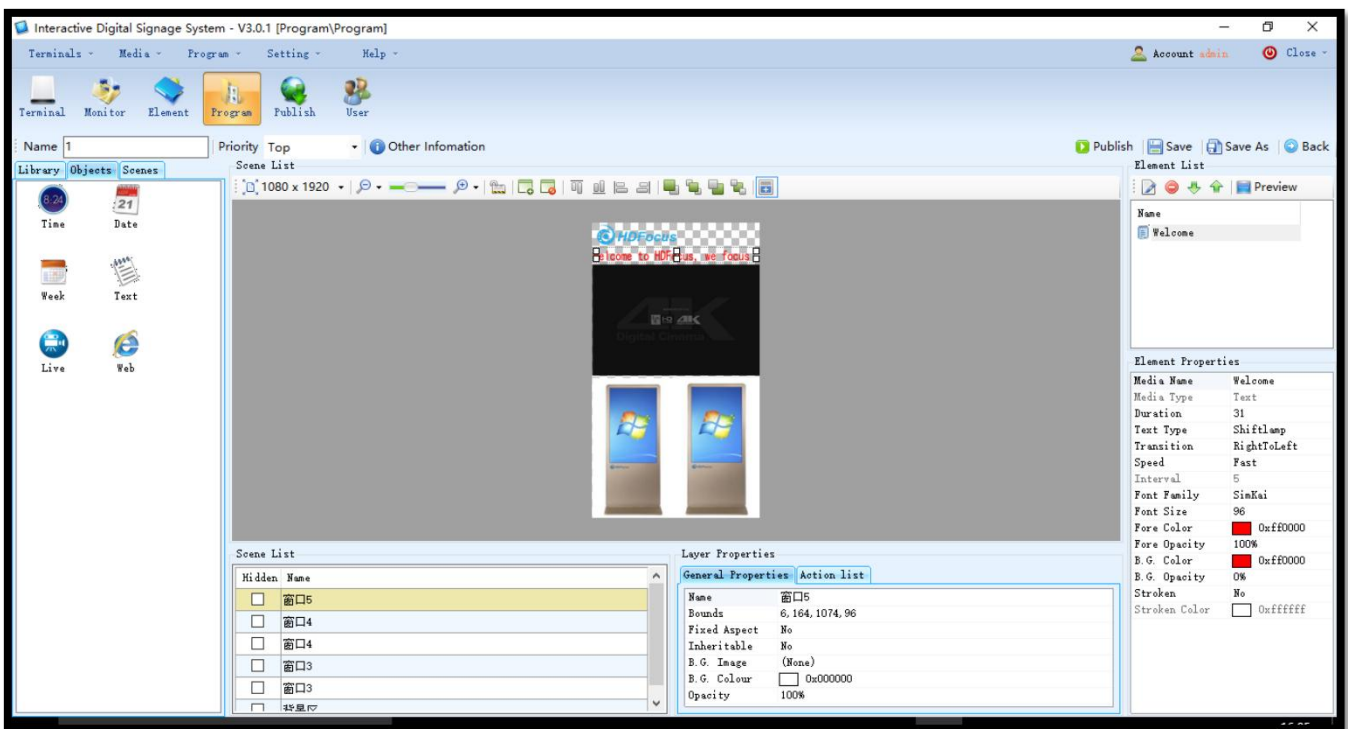
8. Dimension Drawing



9. HD-DS Digital Signage Software

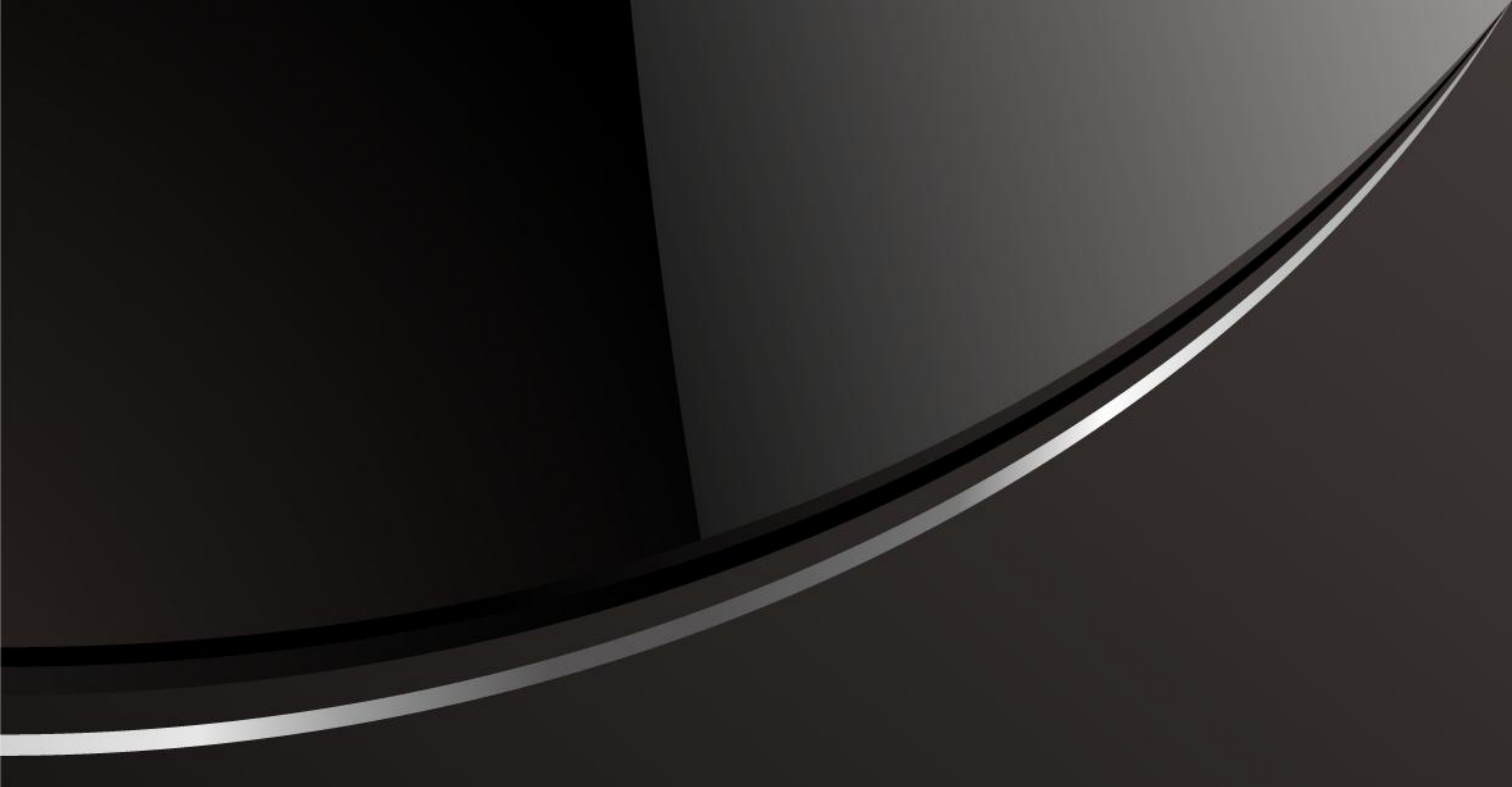


Program Interface Edited by HD-DS Software



HD-DS Key Features:

- ✘ Easy to operate, user can manage the system anywhere as long as he has internet access;
- ✘ Support online edit program and release program;
- ✘ Support visually make program, can preview the program immediately;
- ✘ Support centrally manage the system, but every terminal will download the program and play locally;
- ✘ Networking based, central control of multiple kiosks;
- ✘ Remotely control, such as restart, volume adjust, system upgrade;



Shenzhen HDFocus Technology Co., Ltd

Add: 5th Floor, 51 Building, Bantian No. 3 Industrial Park, Bantian Community, Bantian Street,
Longgang, Shenzhen, China 518129
T: 0086 755 8520 4829

Web: www.hdfocuspro.com